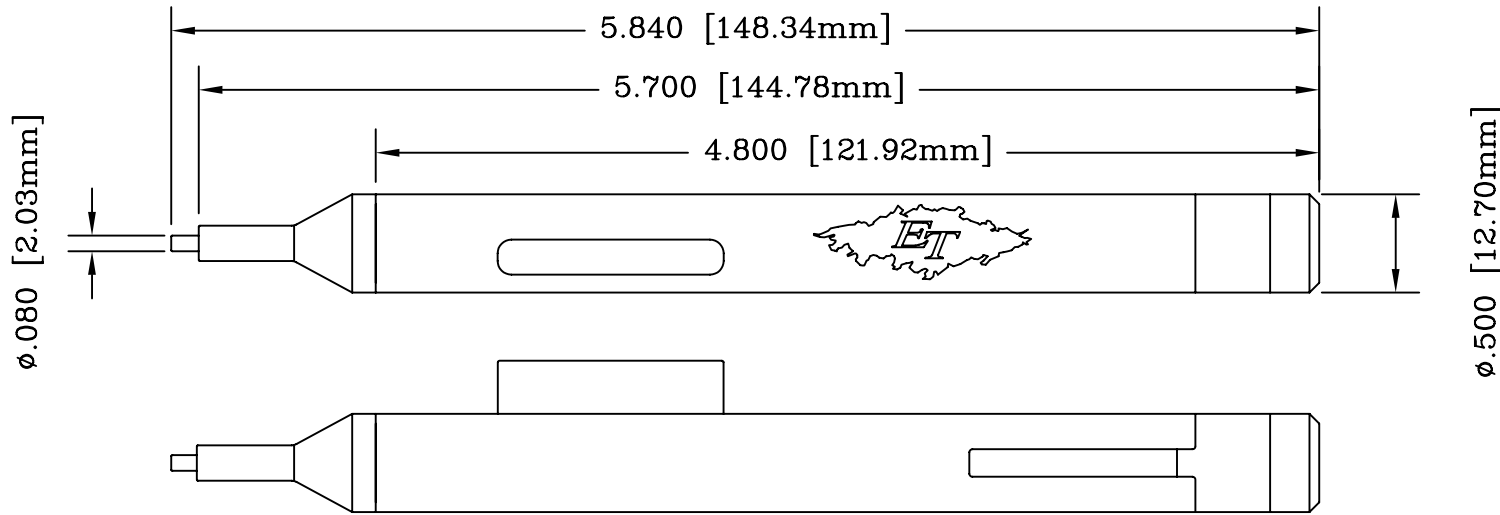


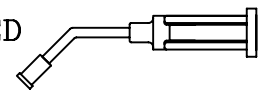
REV	DESCRIPTION	DATE	BY
A	NEW DRAWING	10/04/04	H.N.
B	ADDED ALL CUPS SIZE	11/13/06	H.N.

F7313

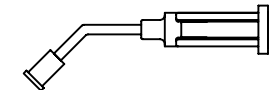
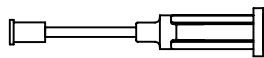


CUPS SIZE INCLUDED

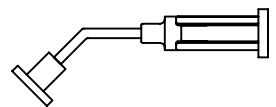
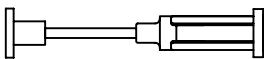
3/32



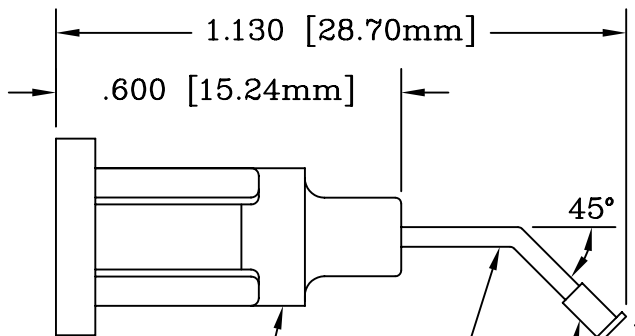
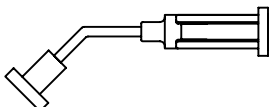
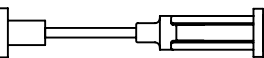
1/8



1/4

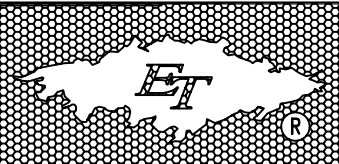


3/8



SEE CUP SIZE

ALL DIMENSIONS ARE IN INCHES UNLESS OTHERWISE SPECIFIED



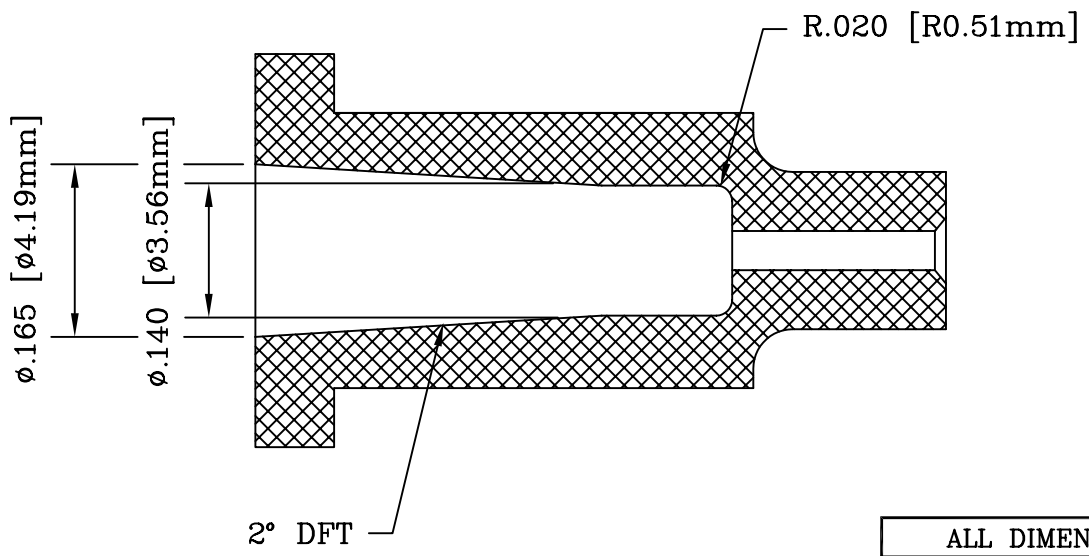
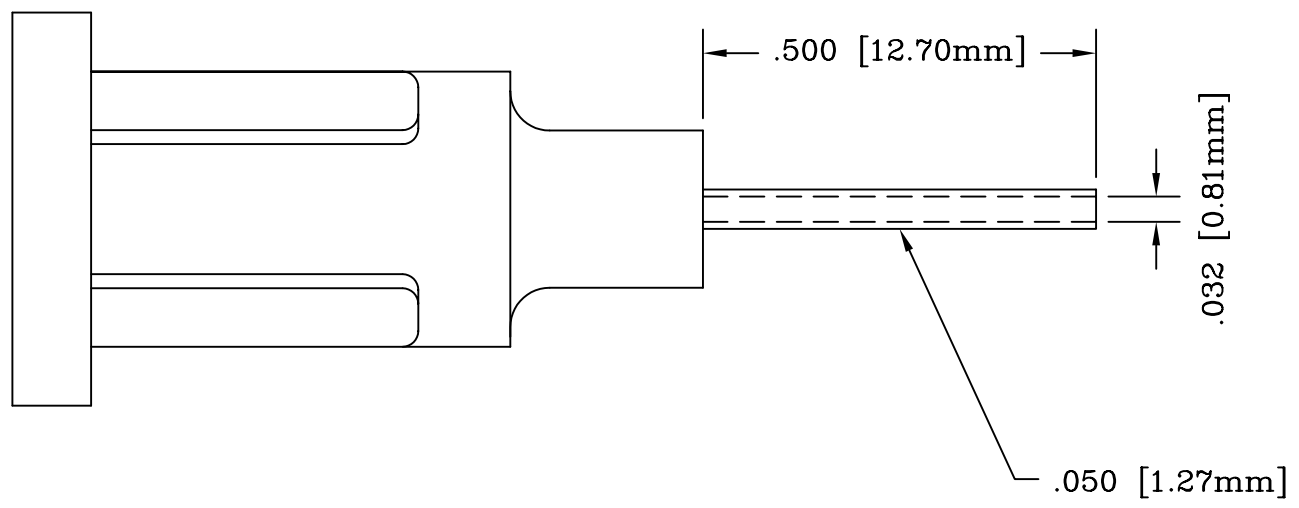
Emulation Technology, Inc.
 — VLSI and SMT ADAPTERS and ACCESSORIES —
 2344 Walsh Avenue, Bldg.F Santa Clara, Ca 95051
 TEL:(408)982-0660 FAX:(408)982-0664

SHEET: 1 OF 2	DATE: 10/04/04	REVISION: B	ASSEMBLY DRAWING
CHECKED: Perry Munroe	DRAWN: Huy Nguyen	ITEM: P/N-102-A	
Scale 1:1	DO NOT SCALE DRAWING	DESCRIPTION: P/N-102-A	

REV	DESCRIPTION	DATE	BY
A	NEW DRAWING	09/17/04	H.N.

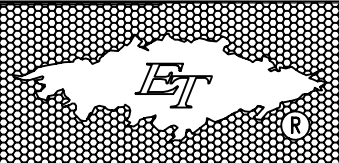
F7313

18 GAUGE PROBE



LUER SLIP FITTING

ALL DIMENSIONS ARE IN INCHES UNLESS OTHERWISE SPECIFIED



Emulation Technology, Inc.
 — VLSI and SMT ADAPTERS and ACCESSORIES —
 2344 Walsh Avenue, Bldg.F | TEL:(408)982-0660
 Santa Clara, Ca 95051 | FAX:(408)982-0664

SHEET: 2 OF 2	DATE: 09/17/04	REVISION: A	ASSEMBLY DRAWING
CHECKED: Perry Munroe	DRAWN: Huy Nguyen		
Scale N/A	DO NOT SCALE DRAWING		DESCRIPTION: P/N-102-A